

# *A Cotswolds Charmer*



MINNEAPOLIS, MINNESOTA

CASE STUDY: February 2013

## **A Cotswolds Charmer**

Ardent fans of the traditional English cottage will no doubt appreciate this gem of a home located just outside Minneapolis, Minnesota. In the midst of a professional community, 10 minutes from the city center, sits this Cotswolds-inspired home. Built to replicate one of the famous English yellow fieldstone cottages, tough Minneapolis winters required a roofing product a bit more weather resistant than traditional thatch. **Certi-label™ cedar**, long known for its weather resistance, was the perfect choice for the design and protection of this lovely home.

## **Inspired by a Cotswolds English Village**

Nestled in a corner of Southwest England is a charming group of villages named The Cotswolds. "Wold" is an old term for "upland common", and "cots" means a sheep shelter. Dry stone walls cropped up centuries ago to support the local wool trade that soon enabled certain merchants to become wealthier than

the monarch himself. Gentle, green, rolling hills frame peaceful country fields. The Cotswolds is well known as a wonderfully romantic area, an excellent place to enjoy a fancy cream tea, a haven for artists, hikers, gardeners, birders and antiques. This home and its **Certi-label™** roof capture the area's best traits on one lovely acreage.



*Lush country setting*





*Roof details*

### Severe Storm Impact

In 2010 the home was subjected to a devastating hail storm with tennis ball sized hail that shattered pretty much everything in its destructive path. A more recent tornado also inflicted some storm damage to the property. The interior of the home was remodeled by a master carpenter about ten years ago, just prior to the addition of a new roof. The problem was, a five and a half foot diameter maple tree subsequently fell on top of the house and destroyed a large section of the roof. Another re-roof job was necessary and **Cedar Shake and Shingle Bureau ("CSSB")** member **Les Jones Roofing, Inc.** was the successful bidder for this job.

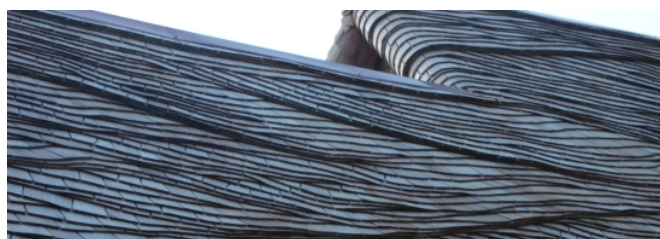
### Unique Woven Cedar Shingle Roof

The **Certigrade®** shingles were manufactured by CSSB member manufacturer **Long Cedar**. **Myron Dahl**, Manager of long time CSSB member distributor, **ABC Supply, Maple Plains, Minnesota**, supplied the job. Neighbors marveled at how hard the roofing crew from **Les Jones Roofing, Inc.** worked. Community

residents were also impressed with how professional the crew was, including the fact that there was perfect job site clean-up each night. The project took eight months in total, including some weekends comprising a total of 282 worker days.

The biggest challenges were making the equipment to steam the shingles and keeping the job water tight as they worked on it. The crew consisted of four men, all long term employees of **Les Jones Roofing, Inc.** (8-15 years each). Great care had to be taken to protect the landscaping.

Creative design work was necessary to achieve such a unique, woven look and initial test patterns were designed. The foreman chosen to lead the team is a true artist, well known for sketching drawings on the crew's bulletin board. Every row of cedar shingles has a step flashing in it; where it meets the wall, valleys had the shingles rolled through them so they were much



*Roof details*





more complicated. 98% of the shingles had to be hand cut and all product was kept covered while it awaited installation.

The crew, not surprisingly, is now receiving requests to quote other woven shingle installation jobs. There are only a few crews in America who tackle these types of special woven shingle installations and the intricacy involved provides good reason. The homeowners are now used to people stopping outside to view their charming residence; they also report being very happy with the crew's attitude and rate of production.



*Kitchen*



*Cozy living room*

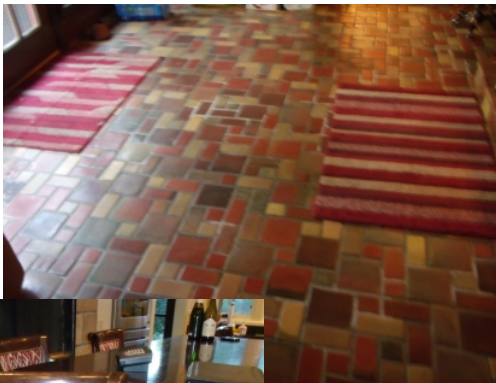
### **Delightful Interior Accents**

This cozy home is filled with the homeowners' wonderful mementos from travel all over the world. It's made even more special with the interior finishing work created by specialty ironworkers and stoneworkers. The ironwork is of Italian design. Imported tiles cover the dining room floor. Reclaimed tobacco barn flooring sourced from South Carolina is found in other



*Good luck statue*

rooms. The details in the house are amazing. Bar stool chairs in the kitchen are upholstered in fabric that comes from Moroccan tents. It took a dedicated ten years to completely remodel this lovely house and the craftsmen's artistry shines throughout.



*Specialty flooring tile*



*Bar stool upholstered with Moroccan tent material*



*Reclaimed tobacco barn flooring*





### A Beautiful Result

The Cotswolds area was home to many of the most famous people in history, including William Shakespeare, Winston Churchill, Beatrix Potter, William Morris and of course, the most famous Potter of them all: J. K. Rowling's boy wizard, Harry. The Cotswolds villages are considered pristine places of natural beauty and England has long protected their unique architecture and design. It's easy to understand why protecting their village's way of life remains of paramount importance to all Cotswolds village residents; in today's fast-paced world, such old-world charm and unique style are treasured qualities to behold.



Looking at this home, it is easy to reminisce about a bygone era, one where the quaintness of an English village overpowers all five senses. Charming, rose-scented pathways, a tiny stream and above all else, lovely peace and quiet, simply abound.



#### Written by:

Lynne Christensen is the CSSB's Director of Operations. She has worked for the CSSB since 1998 and is involved in a variety of departments with a focus on marketing. Christensen holds a Master of Business Administration degree as well as the Certified Association Executive credential. She resides in British Columbia.



Tony Hyatt



Peter Parmenter

#### Photos and Interview by:

District Managers Tony Hyatt and Peter Parmenter are responsible for providing educational and technical assistance with Certi-label™ product selection and installation. With decades of experience in the roofing and forest products industries, they both assist thousands of people each year.

Do you have a Certi-label™ project that qualifies for a case study article? Email Lynne Christensen, Director of Operations, with more details. While we can't promise to profile every project brought to our attention... we do try our absolute best!